



Wildlife Trust for
**Beds, Cambs
& Northants**



The Wildlife Trust for Bedfordshire,
Cambridgeshire and Northamptonshire
People close to nature, in a land rich in wildlife

Huntingdonshire Priority Natural Landscapes



Contents:

- Huntingdonshire's biodiversity
- Why nature recovery?
- Why Priority Natural Landscapes?
 - Lawton Principles: MORE, BIGGER, BETTER, JOINED UP
- Identifying Priority Landscapes in Huntingdonshire
- The Huntingdonshire Priority Natural Landscapes
- Next steps
 - Influencing the statutory Local Nature Recovery Strategy
 - Priority locations for Habitat Banks & off-site BNG
 - Nature friendly farming
 - Parish, town and individual actions



Wildlife Trust for
**Beds, Cambs
& Northants**



Ancient woodlands



Floodplain Meadows



Priority species



Wetlands



State of Nature Report

- 44% of species have decreased over the last 10 years
- 1 in 7 species are threatened with extinction from Great Britain
- Climate change is having an increasing impact on nature in the UK

We are in a
biodiversity crisis!

Why we need to
double nature locally!



Wildlife Trust for
**Beds, Cambs
& Northants**

Why Priority Natural Landscapes



- Habitat and species conservation approaches have had some successes, but State of Nature Reports show these are limited.
- Lawton Report: Space for Nature
 - English nature protection system “not fit for purpose.”
 - Species more , habitats change in response to natural factors and Climate Change.
 - Species and habitats present affect natural processes and nature provides essential services to us e.g. flood protection, pollination, soils.
 - We need to think bigger & at a landscape scale...
- **MORE, BIGGER, BETTER & JOINED UP**



Wildlife Trust for
**Beds, Cambs
& Northants**

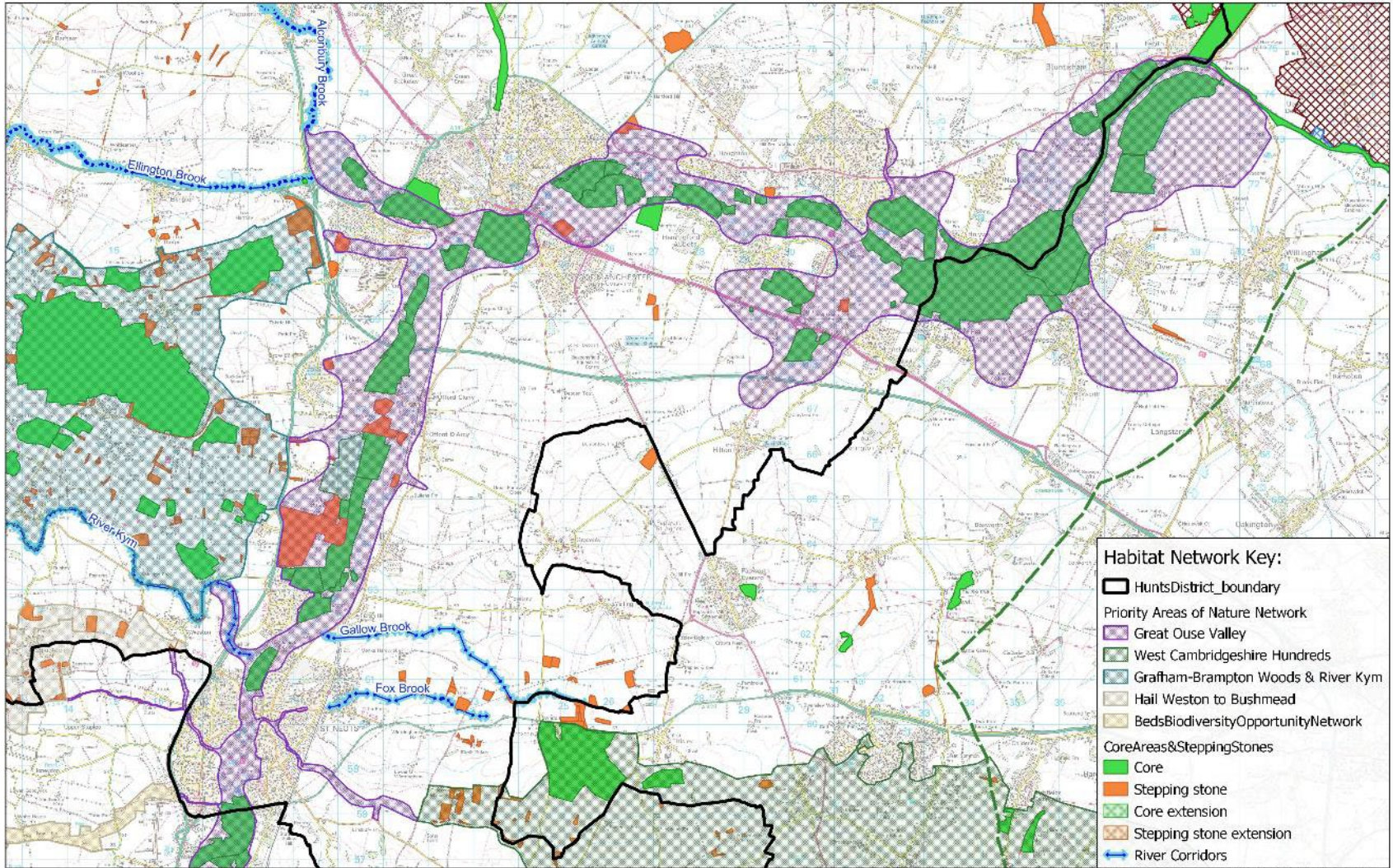
Identifying Priority Landscapes in Huntingdonshire



- Identify location of nature sites and other priority habitats.
- Understanding underlying soils, geology and hydrology.
- Application of published Nature Recovery Principles
 - Identify core habitats
 - Identify stepping-stone habitats and corridors
 - Aim for core habitats of at least 40 Ha and ideally 100 Ha
 - Reduce gaps between habitat patches to 200m or less for habitat specialist species, or 1 Km for generalist species
 - Identify connectivity measures such as nature friendly farming



Wildlife Trust for
**Beds, Cambs
& Northants**

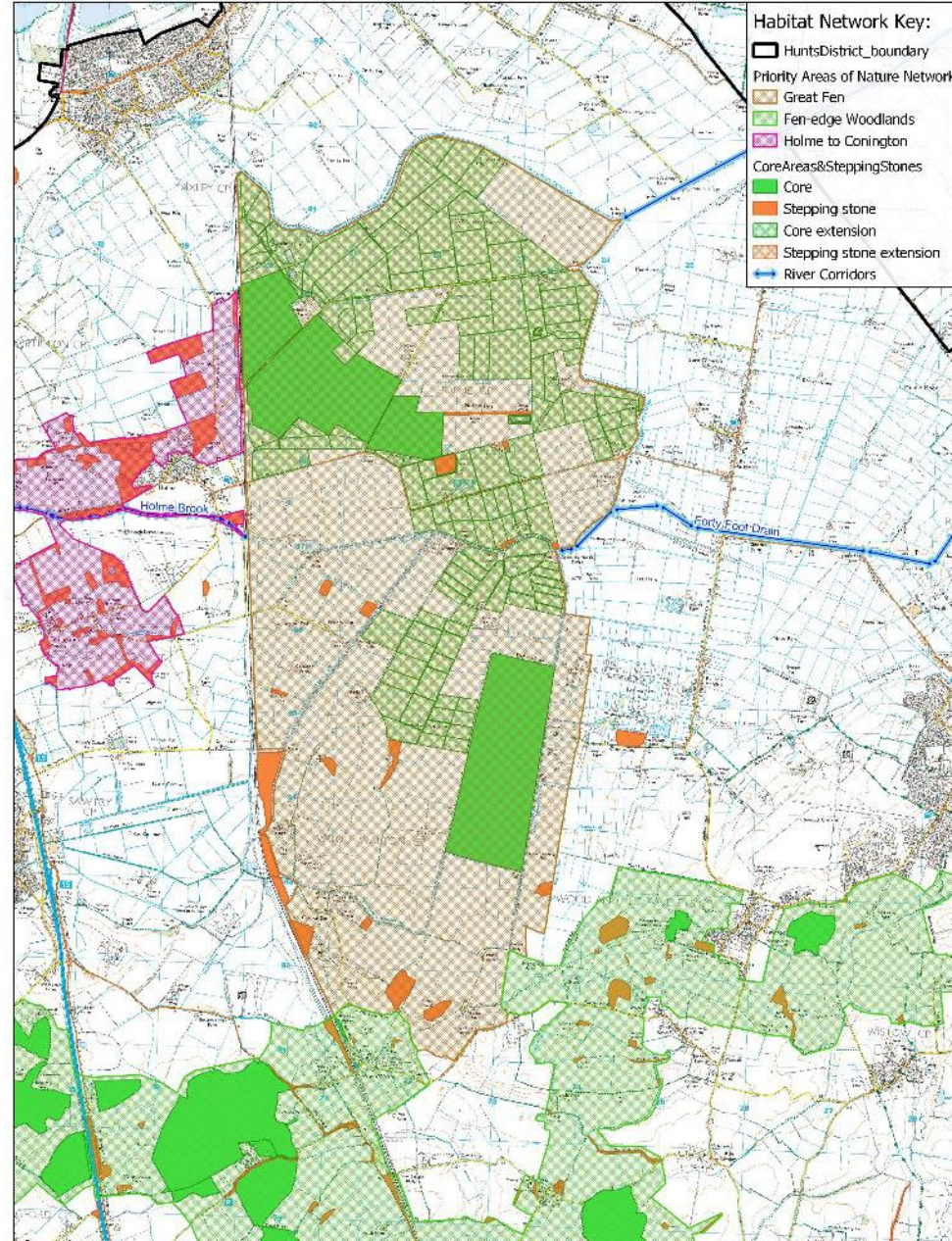


0 1 2 3 4 km



This map is based upon Ordnance Survey material with the permission of Ordnance Survey on behalf of the Controller of Her Majesty's Stationery Office © Crown copyright. Unauthorised reproduction infringes Crown copyright and may lead to prosecution or civil proceedings.
Cambridgeshire County Council 100023205 (2023)





This map is based upon Ordnance Survey material with the permission of Ordnance Survey on behalf of the Controller of Her Majesty's Stationery Office © Crown copyright. Unauthorised reproduction infringes Crown copyright and may lead to prosecution or civil proceedings. Cambridgeshire County Council 100623205 (2023)

Great Fen:

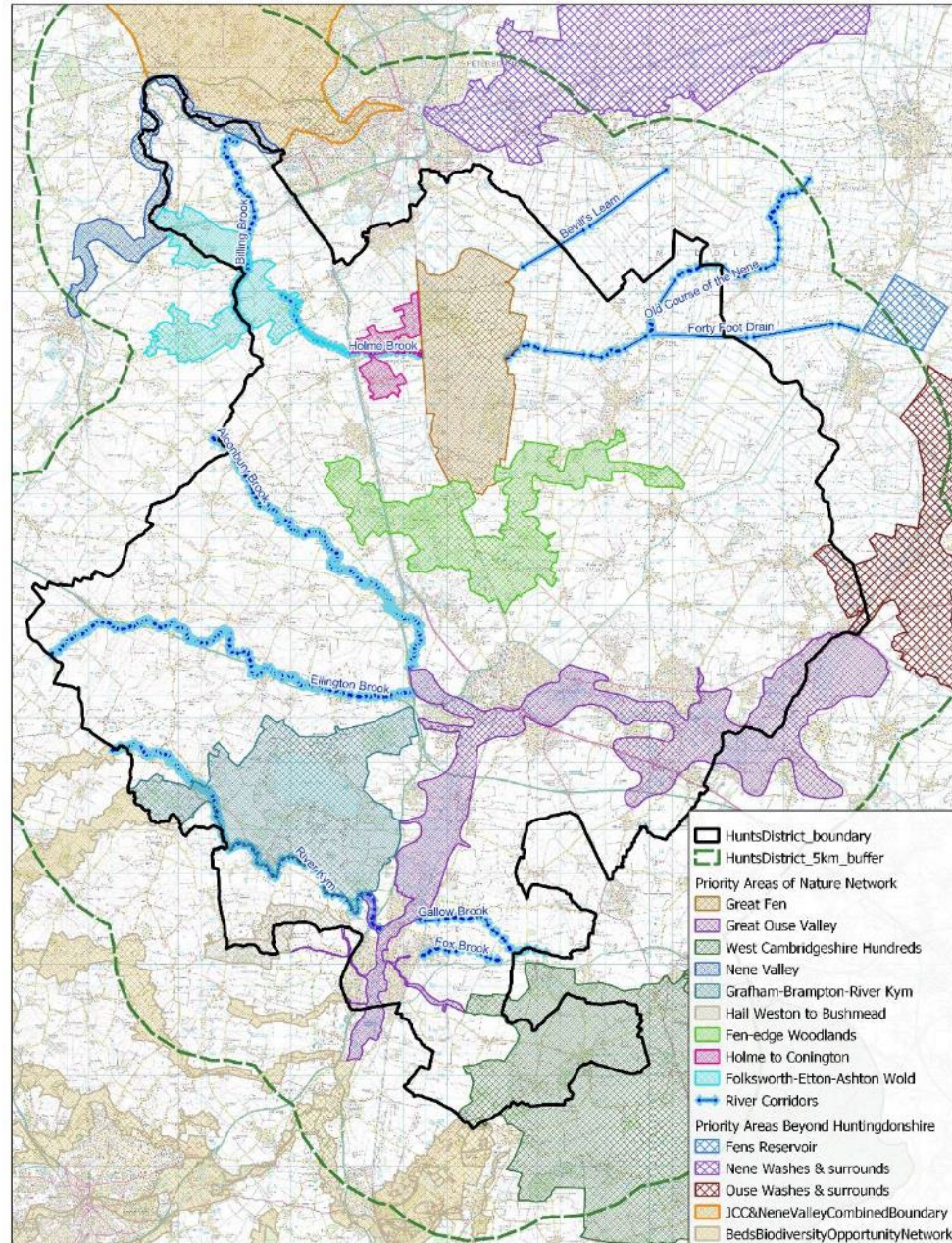
Lawton principles in action.

- More.
- Bigger.
- Better
- Joined Up



Wildlife Trust for
**Beds, Cambs
& Northants**

Huntingdonshire Priority Natural Landscapes



Huntingdonshire Priority Natural Landscapes

Next Steps:

- Influence statutory Local Nature Recovery Strategy.
- Direct locations of Habitat Banks & off-site BNG.
- Nature Friendly Farming.
- Influence parish, town & individual actions through Biodiversity for All.

